

# ACCELERATED START

## Segment A and B

### PROJECT LIMITS

#### Segment A

I-4 from east of U.S. 27 to west of S.R. 429 (FPID: 201210-8)

- > One additional lane in each direction along I-4 from U.S. 27 to S.R. 429
- > Two new Express Lanes (for future use) in each direction on 1.6 miles of I-4
- > Widening the two-lane off ramp at the ChampionsGate Blvd. interchange

#### Segment B

I-4 from west of S.R. 429 to east of World Drive (FPID: 431456-6)

- > One additional lane in each direction along I-4 from S.R. 429 to World Drive
- > Two new Express Lanes (for future use) in each direction on 1.3 miles of I-4

### LOCATION

Polk and Osceola Counties

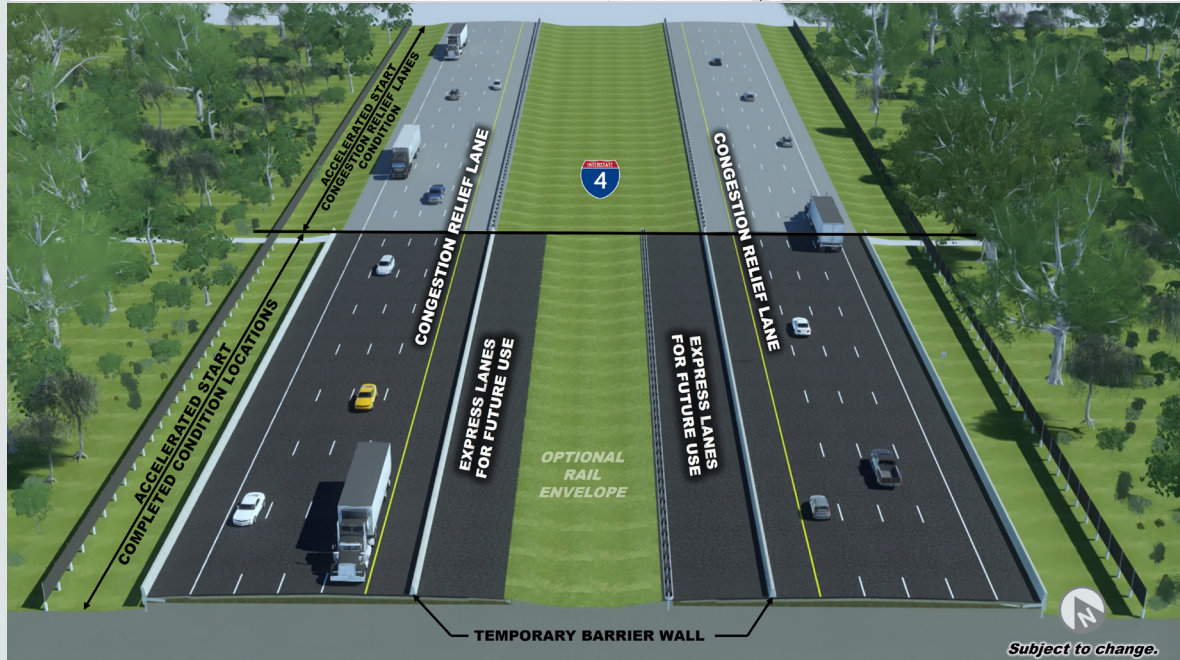
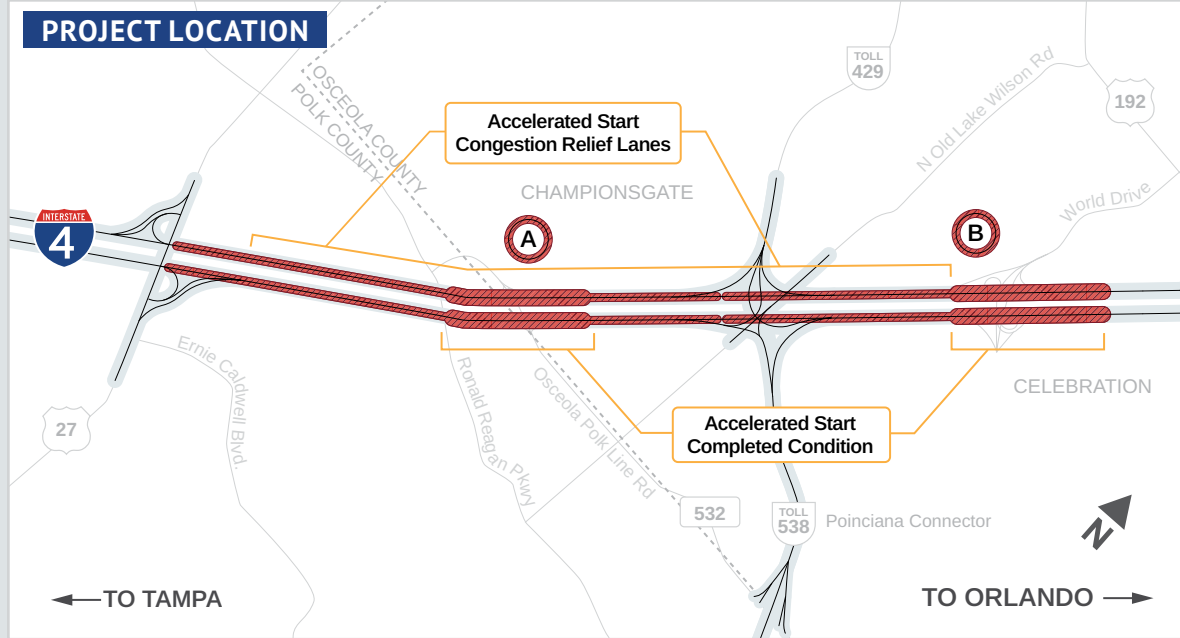
### MILES

7.5 miles

### PHASE

Construction

### PROJECT LOCATION



### PROJECT BENEFITS

**CONGESTION RELIEF =**  
more reliable trips



**STRENGTHEN**  
critical infrastructure



**INCREASES SUPPLY CHAIN**  
efficiency with enhanced travel times for delivery of goods



## Project Description




Moving I-4 Forward's Accelerated Start Project has prioritized construction of new congestion relief lanes – one general use lane in each direction – along Interstate 4 (I-4). These additional lanes have provided enhanced regional connectivity by improving travel times along I-4.

The Accelerated Start project has served a dual purpose: the construction of congestion relief lanes has improved this section of I-4 quickly, and this advanced project has helped facilitate traffic shifts and enhanced safety during the construction of Moving I-4 Forward core projects.

Having these additional lanes has increased vehicle capacity to improve traffic flow, allowing drivers to get to their destination safer and faster. This project is divided into two segments.

Segment A	Segment B
<ul style="list-style-type: none"> <li>✓ One additional lane in each direction on I-4 from east of U.S. 27 to west of State Road (S.R.) 429.</li> </ul>	<ul style="list-style-type: none"> <li>✓ One additional lane in each direction on I-4 from west of S.R. 429 to World Drive.</li> </ul>
<ul style="list-style-type: none"> <li>✓ Two new Express Lanes (for future use) in each direction on 1.6 miles of I-4.</li> </ul>	
<ul style="list-style-type: none"> <li>✓ Widening the two-lane off ramp at the ChampionsGate Blvd. interchange.</li> </ul>	<ul style="list-style-type: none"> <li>✓ Two new Express Lanes (for future use) in each direction on 1.3 miles of I-4.</li> </ul>

## What to expect during construction:

-  **Temporarily Reduced Shoulders** with a concrete barrier will be placed as new lanes are built.
-  **Temporary lane closures**, typically at night when traffic is reduced.
-  **Noise** of road milling and surfacing will occur.


## Project Schedule

- **2025:** Construction of the two new congestion relief lanes, one in each direction between U.S. 27 and World Drive.
- **2026:** Project Completed

## Congestion Relief Lanes Opened Spring 2025

### About Moving I-4 Forward

The Moving I-4 Forward Program is a series of projects under Governor Ron DeSantis' bold Moving Florida Forward Infrastructure Initiative. This program is dedicated to enhancing safety, efficiency, and regional connectivity through one of the areas in most urgent need of congestion relief along I-4 by adding congestion relief lanes, extended express lanes, and enhanced interchanges and bridges. This collaborative and innovative program will enhance Florida's supply chain and economic growth by using a dynamic workforce and the latest technology. The completion of this program will provide a regional benefit to Central Florida by creating a continuous express lane system from Seminole County, through downtown Orlando in Orange County, all the way to U.S. 27 in Polk County.



**Contact:**  
 FDOT Corridors Program Office  
 FDOT-CPOCOMM@dot.state.fl.us



**MovingI4Forward.com**

Follow us on social media for the latest updates  
 @MyFDOT\_CPO\_MI4



